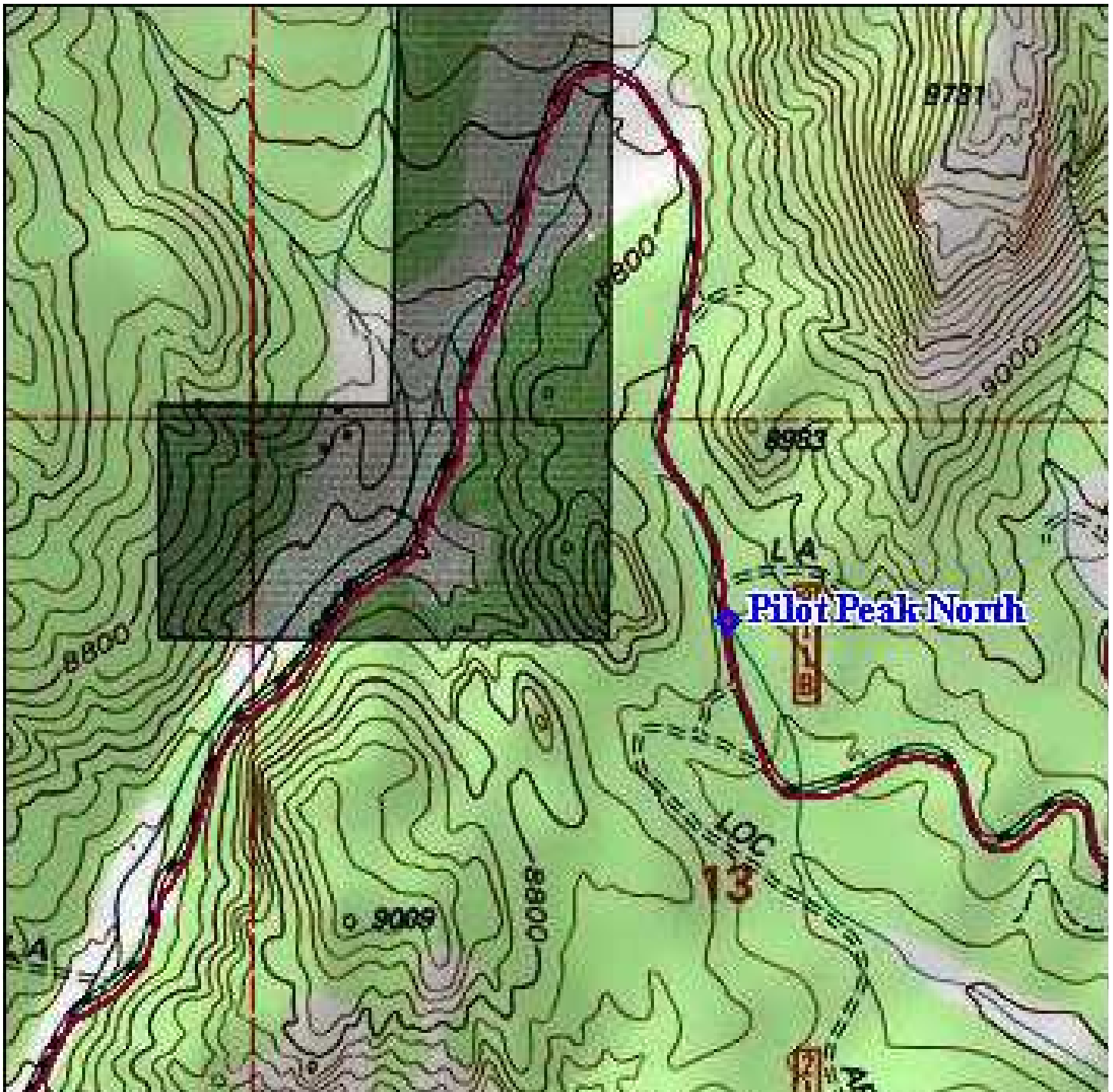


Pilot Peak - Map for both North & South locations



From Hwy 24 West/East - turn north on County Hwy 77/Tarryall Road, stay on this road to County Road 211, turn north again, follow CR 211 to signs going to either the North pits or South pits.

Approximate GPS coordinates to turn off CR 211:

Decimal degrees: 39.09558°N -105.39150°W

Degrees, decimal minutes: 39°05.735'N 105°23.490'W

Degrees, minutes, seconds: 39°05'44"N 105°23'29"W